

Storm Brakes

SRB-SA Static Rail Brake-Self Adjusting Spring Set, Hydraulic Release shown

DRB-SA Dynamic Rail Brake-Self Adjusting Spring Set, Hydraulic Release with smooth shoes available

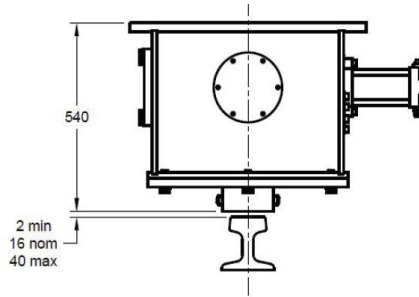
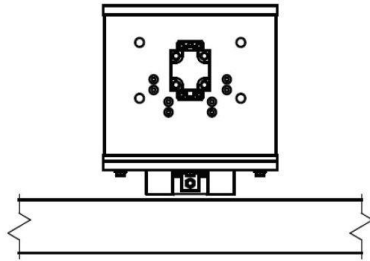
RB-E-SA Rail Brake-Self Adjusting Spring Set, ELECTRIC Release Rail Brakes available

STANDARD FEATURES

- Fabricated from high quality structural steel.
- Brake shoes easily removed and replaced
- Min Paint Thickness DFT: 200-275 µm

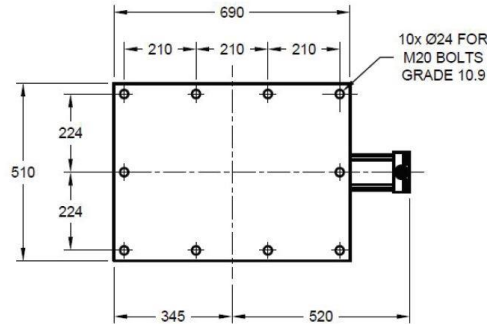
SUPPLIED WITH BRELX HPU HYDRAULIC POWER UNIT

- Prewired junction box
- Hand pump for manual release
- Solenoid valve with manual override



SELF ADJUSTING MECHANISM (PATENT PENDING)

RB-SA-220 – Braking force at various stroke extensions			
Shoe Extension "A" (mm)	Applied force (kN)	Braking force (kN, $\mu=0.5$)	
"RELEASED"	0	470	235
	2	450	225
	8	445	222
"SET"	16	440	220
	28	420	210
	40	410	205



AVAILABLE SIZES:

Static Rail Brake: SRB-SA: 150kN & 220kN.

Dynamic Rail Brake: DRB-SA: 120kN & 180kN

NOMINAL SPECIFICATIONS SRB-220-SA

- NOMINAL BRAKING FORCE 220 kN @ SHOE EXTENSION "F" AND COEFFICIENT OF FRICTION $\mu=0.5$
- BRAKE MUST BE INSTALLED ABOVE THE RAIL AT A HEIGHT OF 540 mm + "A" (APPLICABLE PISTON ROD EXTENSION) +/- 2mm
- STATIC SERIES "S" OF RAIL BRAKES MUST BE USED FOR STATIC BRAKING (CRANE AT STOP POSITION)